

F1

GAS SENSOR

Remote fixed detector for Flammable Oxygen and Toxic Gases

Specification Sheet
ref C105Ev1

- EXPLOSION PROOF
- ENGINEERED FOR EASE OF MAINTENANCE AND REDUCED RUNNING COSTS
- WIDE RANGE OF SENSOR CELL TYPES
- IN SITU REPLACEABLE PLUG IN SENSORS
- LOW COST STOCK HOLDING
- REDUCED REPLACEMENT COSTS
- CATALYTIC
- ELECTROCHEMICAL
- THERMAL CONDUCTIVITY
- SEMICONDUCTOR
- INFRARED
- PID
- REPLACEABLE SINTERED DISC - END CAP
- HARSH ENVIRONMENTAL USE
- ROBUST CORROSION RESISTANT STAINLESS STEEL HOUSING



Extremely high quality and cost effective sensor providing a wide choice of sensor elements. Compact innovative design ensures fast response to gas with high accuracy measurement. Designed to operate in a full range of environments from commercial premises through to heavy industrial applications which may require hazardous area sensing. A range of accessories is available enabling the sensor to be used in diverse applications such as HVAC ducting, flowline systems or freestanding open air marine applications.

Certification

ATEX
No. SIRA 03 ATEX 1176X
IECEX
No. SIR 06.0016X
II 2 GD
Exd IIC T6 Gb -20°C Ta +35°C
Extb IIIC T85°C Db
Exd IIC T5 Gb -20°C Ta +50°C
Extb IIIC T100°C Db
Exd IIC T4 Gb -20°C Ta +85°C
Extb IIIC T135°C Db
Exd IIC T3 Gb -20°C Ta +120°C
Extb IIIC T200°C Db

UK Design Patent

No. 2025396

Housing Material

Stainless Steel 316 S16

Dimensions

Body length 32mm dia 33mm

Weight

165gms

Body Style

Cylindrical with hexagonal section option

Cable Exit Mounting Thread

20mm 1.5 pitch – options available 25mm, 3/4 NPT

Accessory Mounting Thread

33.3mm 1.25 pitch

Lock Screw

3mm-1mm key

Housing Components

Body ref. 001-002
End cap ref. 001-003

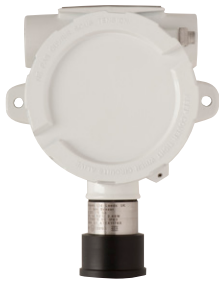
Ingress Protection

IP64 + water shield IP65
with hydrophobic screen IP66

DETECTOR HEADS



XDI win



XDI



30J

SENSOR ACCESSORIES



1



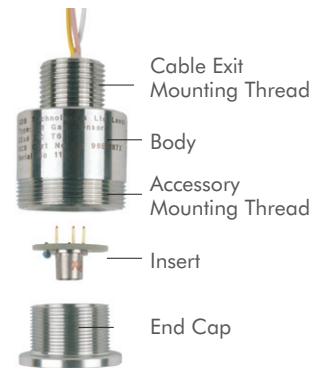
2



3



4



1. 003-010 Collector Cone & Universal Fitting
2. 003-090 Duct Mount Kit
3. 008-311 Flow Adaptor - nylatron
4. 003-035 Water Shield - stainless steel

