


AQ PRO NEW!



Handheld Indoor Air Quality Monitor

The Latest in Indoor Air Quality Monitoring & Real-Time Data-Logging for IAQ Analysis in Hospitals, Universities, Labs, Airports, and more

- Customize UP to 3 Gases (Multiple Parameters - Up to 6 Total)
- REAL-TIME Continuous Data-Logging
- Active Internal Sampling Pump
- Compact Handheld Unit
- PC Software & USB Included
- Large Internal Memory (2000)
- Long Lasting Rechargeable Battery
- Barometric Air Pressure
- Protective Magnetic Rubber Boot
- Optional Wireless Printer
- Optional Handheld Probe
- MADE IN USA 



% RH

Temp

Barometric Pressure

CO₂

CO

Formaldehyde

NO₂

SO₂

H₂S

O₂

NO



“Built with Quality in Mind”



Real-Time Data-Logging for Graphs, Data Review, IAQ reports

Wireless Communications with Computer & Remote Printer

Light Weight, Durable, Handheld Design

E Instruments International

www.E-Inst.com

P: 215-750-1212 F: 215-750-1399 A: 402 Middletown Blvd, Ste 216 Langhorne, PA 19047

AQ PRO



Specifications

| Parameter | Sensor | Range | Res. | Accuracy |
|-------------------------------|-------------|--|---------------------------------------|-------------------|
| Relative Humidity | TFC | 5 - 95% RH | 0.1% RH | ±2% RH |
| Ambient Temp. | Pt100 | -40 - 257°F (-40 - 125°C) | 0.1°C/F | ±0.4°C (0 - 60°C) |
| Barometric Pressure | Solid State | 260 - 1260 mbar | 1 mbar | ±2 mbar |
| Differential Pressure | Bridge | ± 8.0 inH ₂ O (±20.0 mbar) | 0.1 inH ₂ O (0.25 mbar) | ±1% of rdg. |
| Temperature Type K T1 | Tc K | 0 - 2000°F (0 - 1100°C) | 1°C/F | ± 2% of rdg |
| Air Velocity | Calculated | 0 - 300 ft/sec | 1 ft/sec | |
| Electromagnetic Compatibility | | EN 61326-1, Portable Equipment | | |



AQ PRO ORDERING CODE

Part #: PRO - ___ - ___ - ___

Example: Part #: PRO - C2 - C - H = CO₂, CO, & H₂S

ALL AQ PRO Kits Include:

- Temperature, % Relative Humidity
- Barometric Pressure
- PC Software & USB Cable
- REAL-TIME Continuous Data-Logging
- Bluetooth Connectivity
- Protective Carrying Case
- Continuous Active Internal Sampling Pump
- Differential Pressure
- Operating Manual & Quick Reference Guide
- Long Lasting Battery & AC Charger
- Factory Calibration Certificate

Select UP to ANY 3* Gases Below:

| Parameter | Sensor | Range | Res. | Accuracy |
|---|-------------------|--------------------------------|---------|------------------------|
| C2 - Carbon Dioxide (CO ₂) ¹ | NDIR | 0 - 5,000 ppm | 1 ppm | ±2% of rdg. ± 10 ppm |
| C - Carbon Monoxide (CO) ¹ | EC ^{2,5} | 0 - 200 ppm | 0.1 ppm | ±4% of rdg. ± 0.5 ppm |
| F - Formaldehyde (CH ₂ O) ^{3,4} | EC ^{2,5} | 0 - 10 ppm (0 - 10,000 ppb) | 1 ppb | ± 5% of rdg. ± 50 ppb |
| H - Hydrogen Sulfide (H ₂ S) ¹ | EC ^{2,5} | 0 - 100 ppm | 1 ppm | ±4% of rdg. ± 0.5 ppm |
| N - Nitrogen Dioxide (NO ₂) ¹ | EC ^{2,5} | 0 - 20 ppm | 0.1 ppm | ±4% of rdg. ± 0.5 ppm |
| O - Oxygen (O ₂) | EC ^{2,5} | 0 - 25% | 0.1 % | ±0.1% vol rdg. |
| S - Sulfur Dioxide (SO ₂) ¹ | EC ^{2,5} | 0 - 20 ppm | 0.1 ppm | ± 4% of rdg. ± 0.5 ppm |
| X - Nitric Oxide (NO) ¹ | EC ^{2,5} | 0 - 250 ppm | 0.1 ppm | ± 4% of rdg. ± 0.5 ppm |

1. Other Ranges are Available Upon Request 2. Electrochemical 3. Accuracy Based on Laboratory Conditions
4. This sensor may have interference from H₂, CO, H₂S and other reducing gases such as alcohols
***5. Maximum of TWO (2) Electrochemical (EC) Sensors Per Unit**

Optional Accessories



Wireless Bluetooth™
Printer
(EE900P)



Sampling Probe
(E85AACSF13)



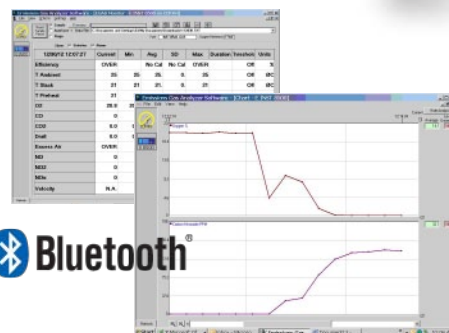
Moisture Exchange
Tube for Calibration
(AQMET)



Pitot Tube
for Air Velocity
(BB610032)



CH₂O O₂ CO
NO₂ % RH
CO₂ SO₂ H₂S



AQ Gas® Real-Time
Datalogging Software

Distributed By:



E Instruments International

www.E-Inst.com

P: 215-750-1212 F: 215-750-1399 A: 402 Middletown Blvd, Ste 216 Langhorne, PA 19047